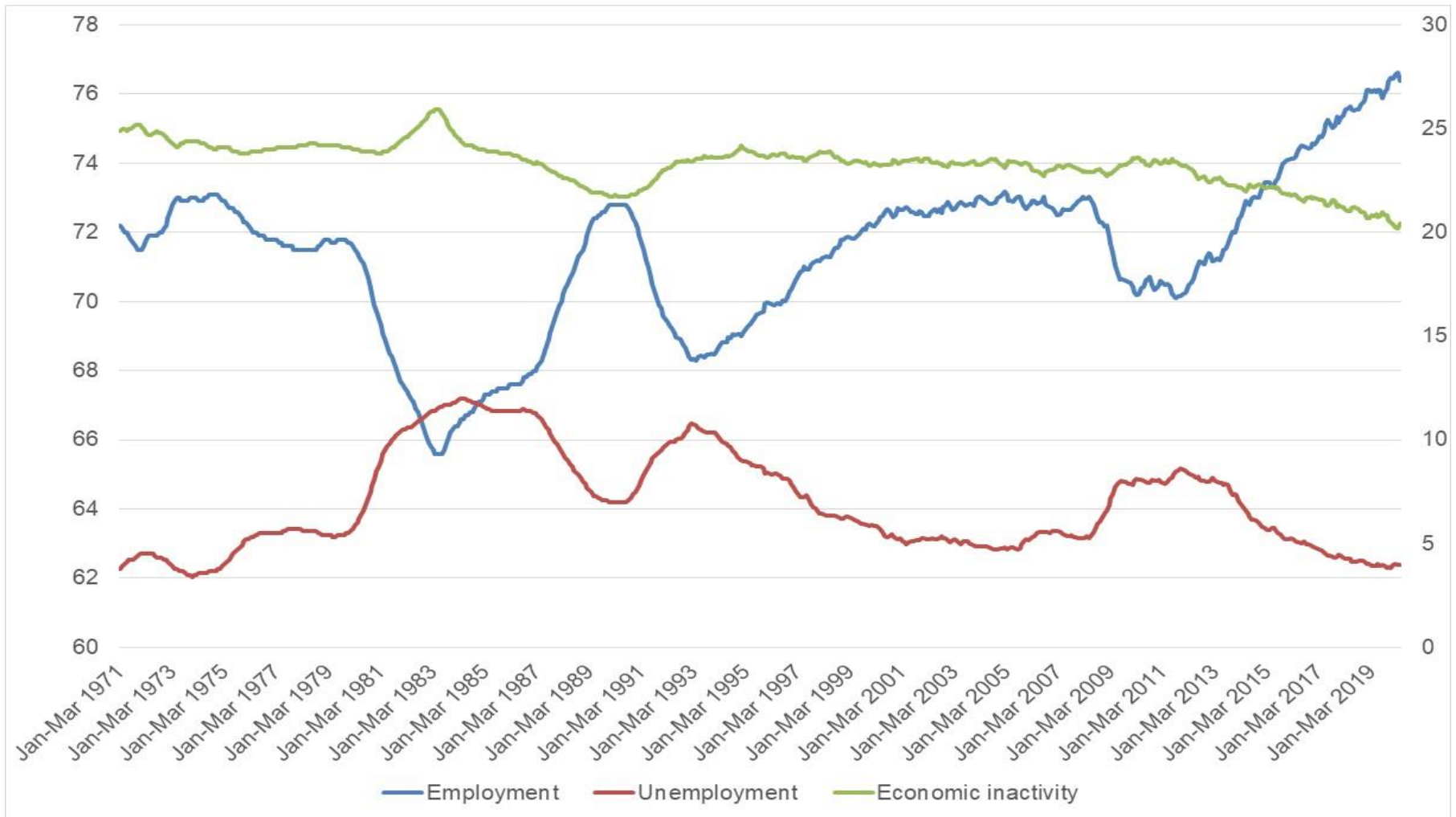
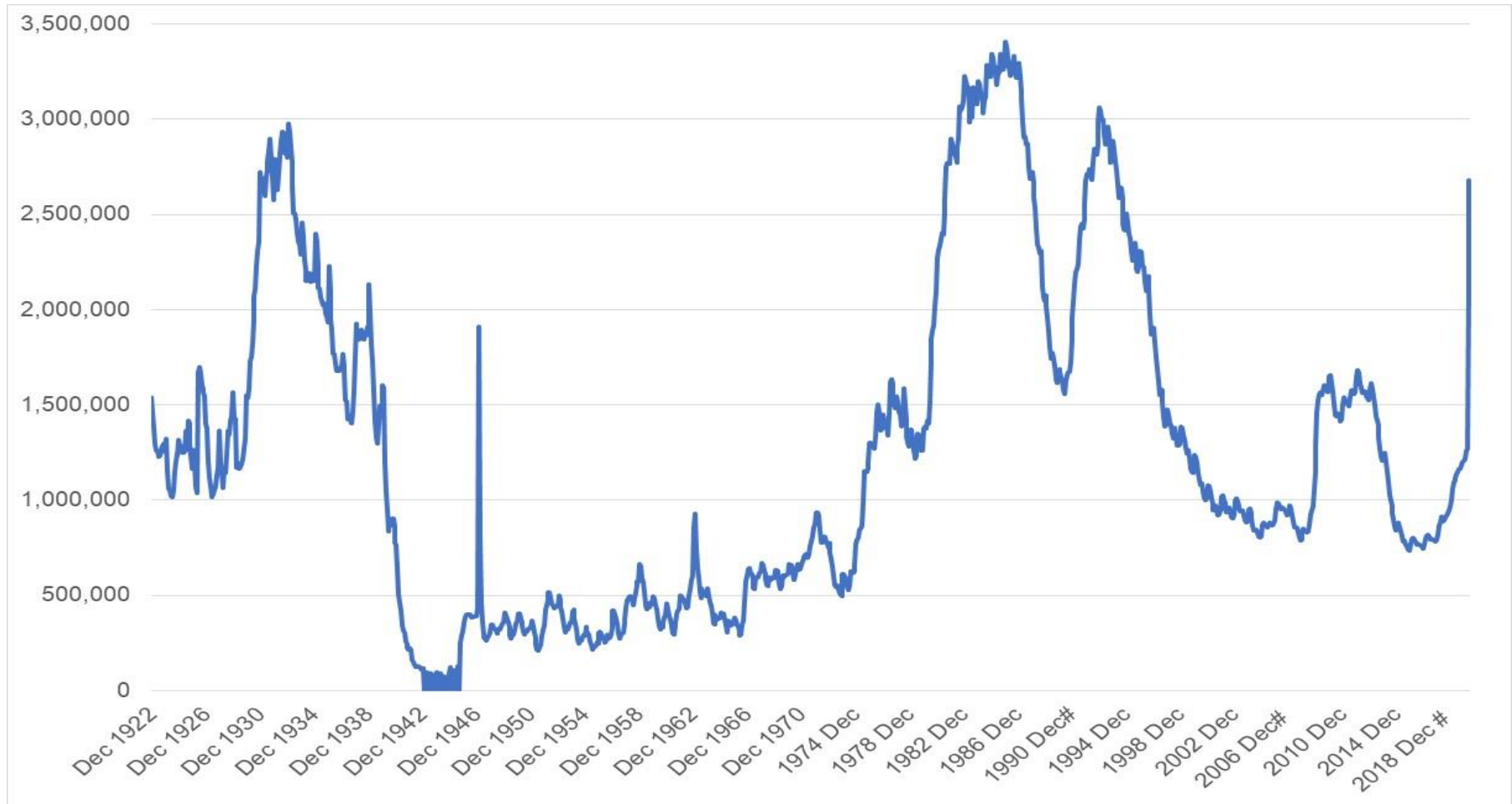

Labour market update

June 2020

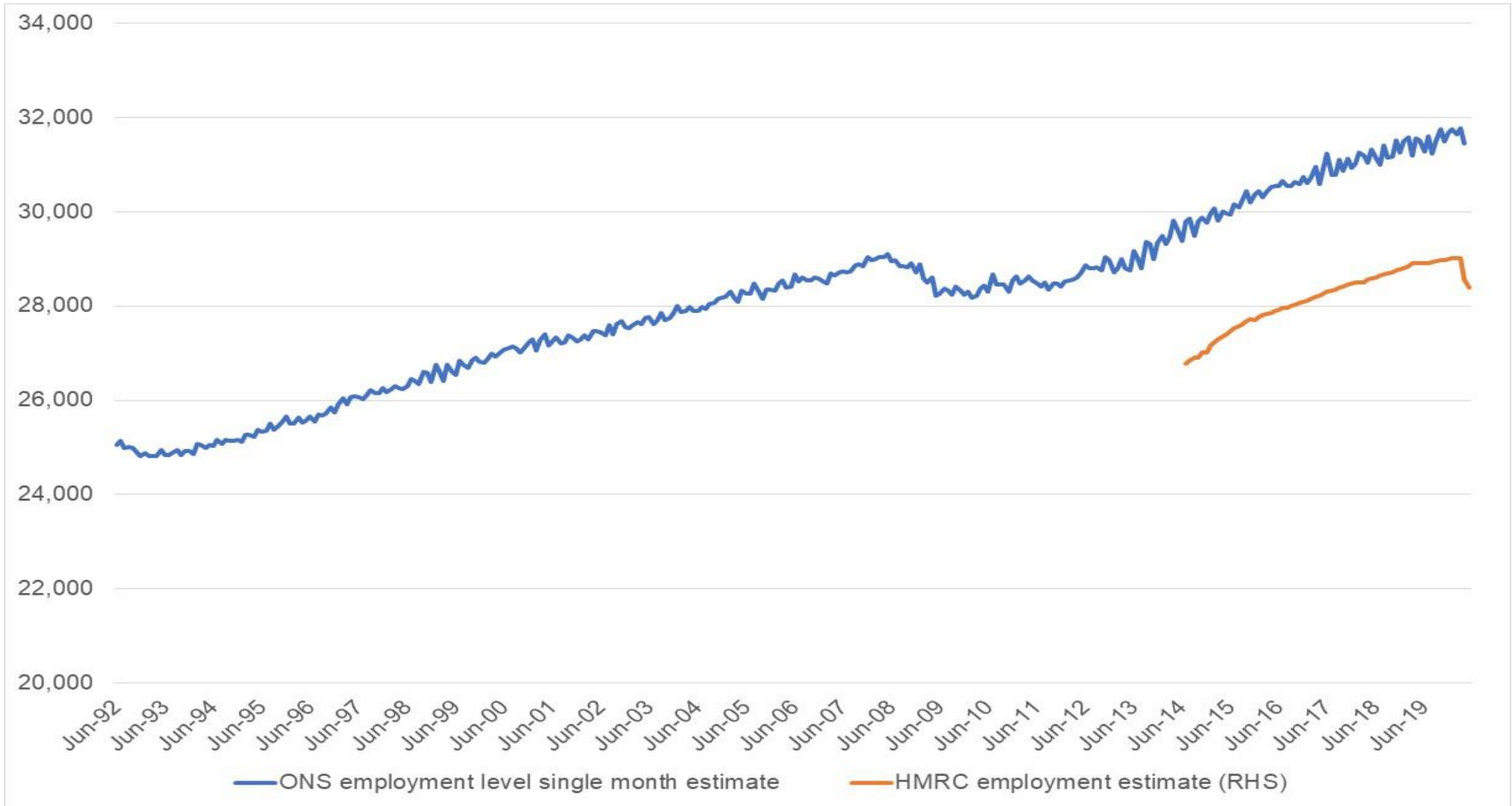
ALL QUIET? BUT THIS IS FEB-APR



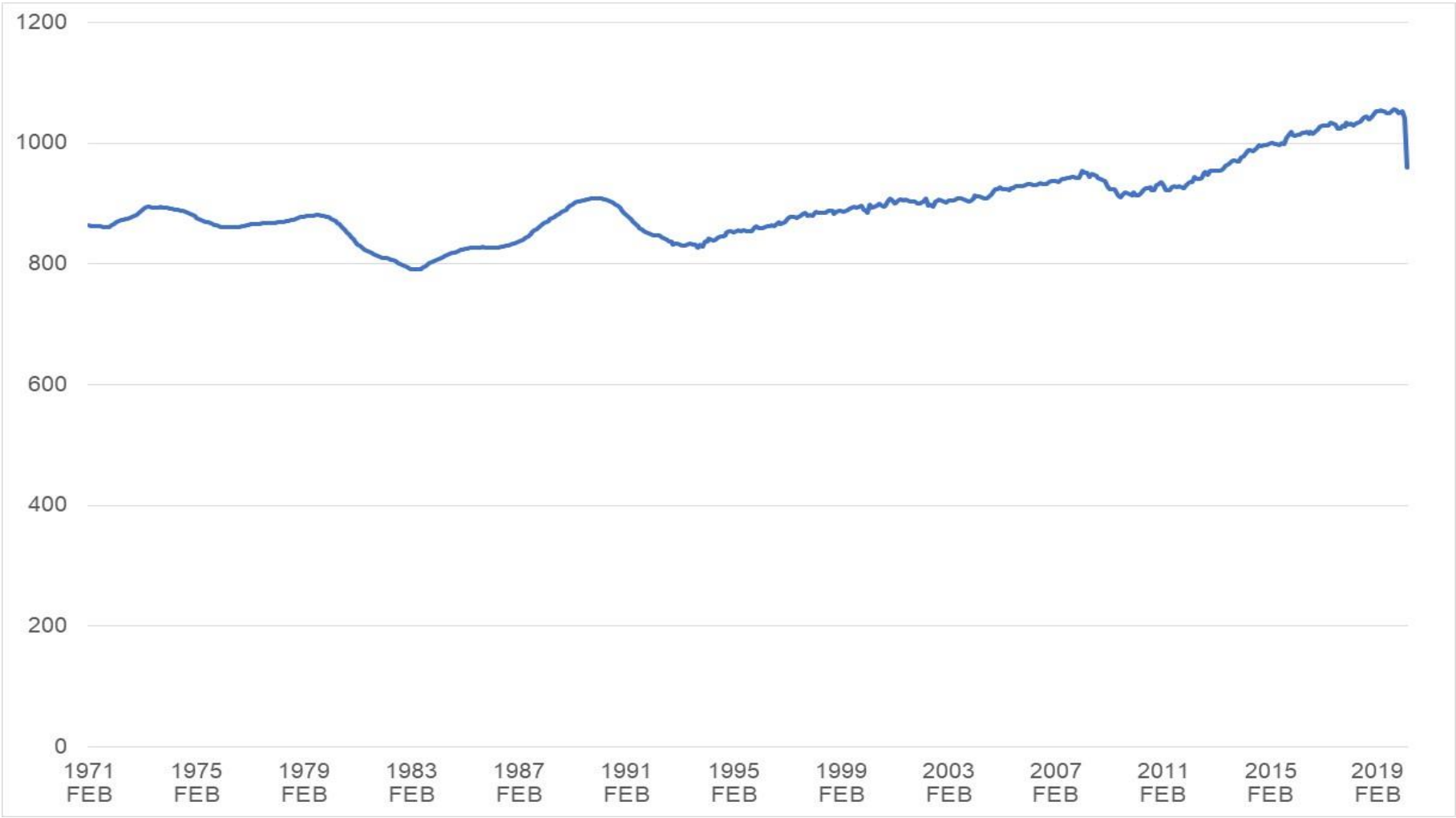
BIGGEST ANNUAL RISE IN CLAIMANT UNEMPLOYMENT SINCE 1922



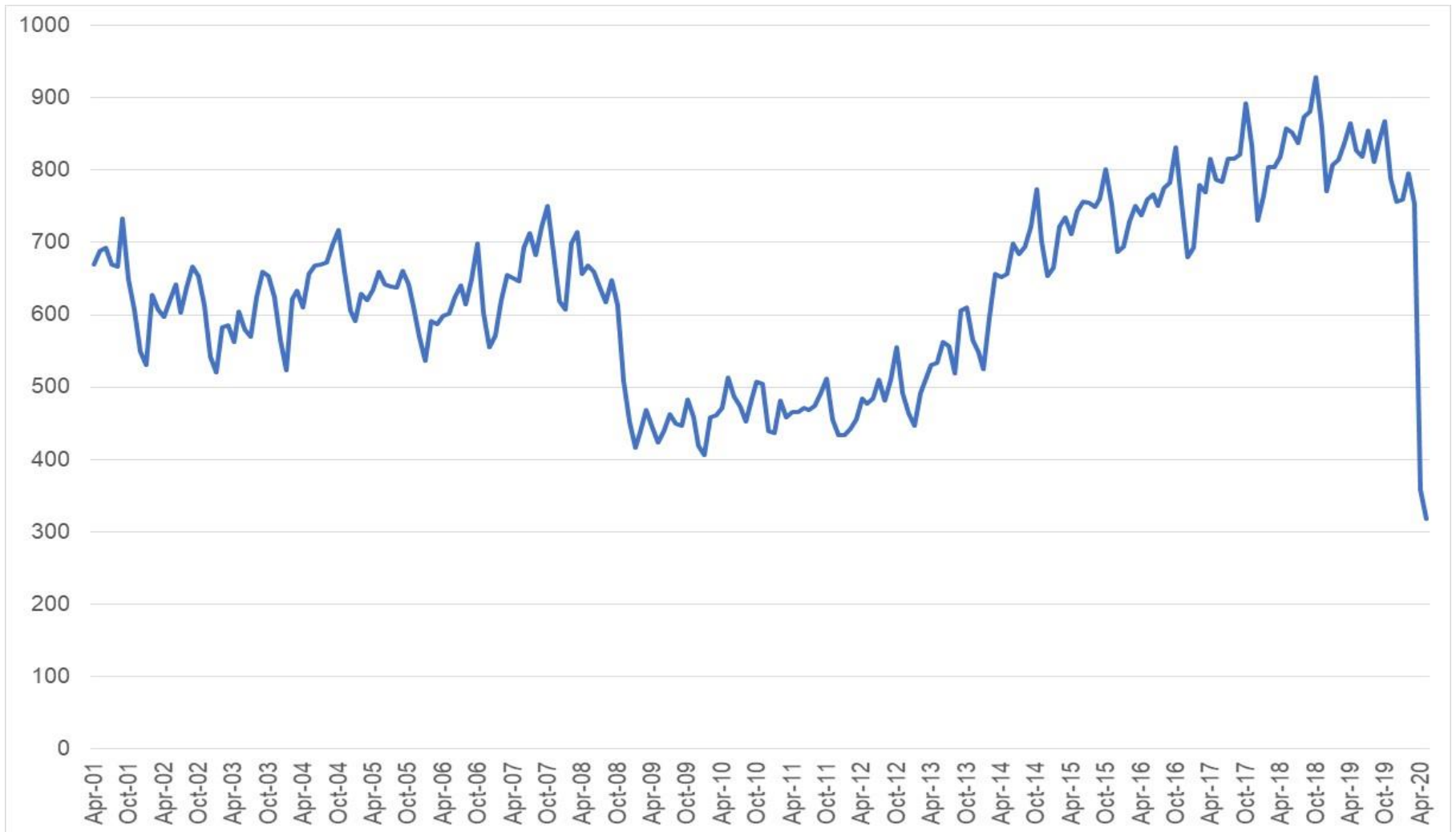
600K DROP IN EMPLOYMENT FROM MARCH TO MAY



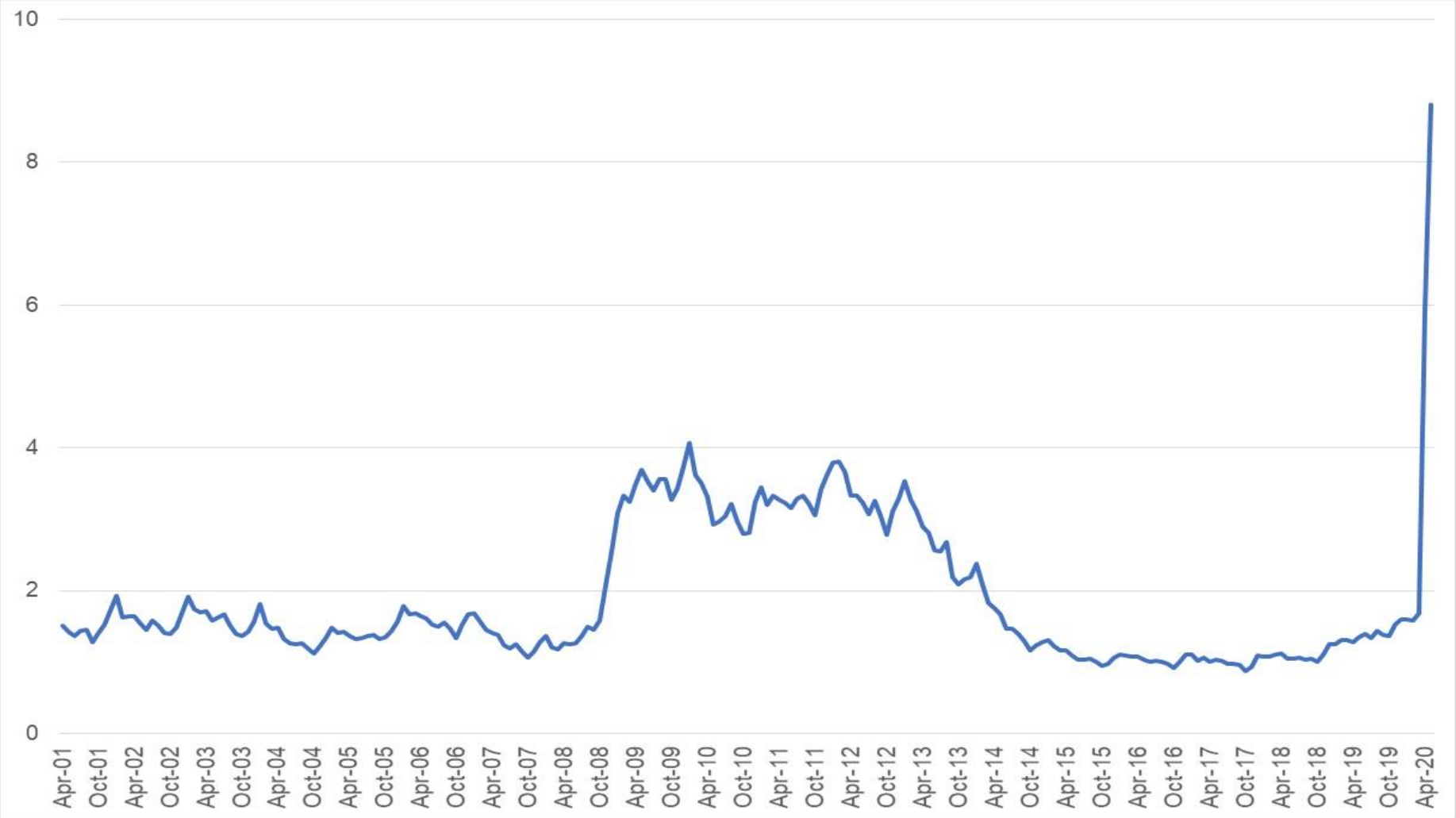
80 MILLION FEWER HOURS WORKED



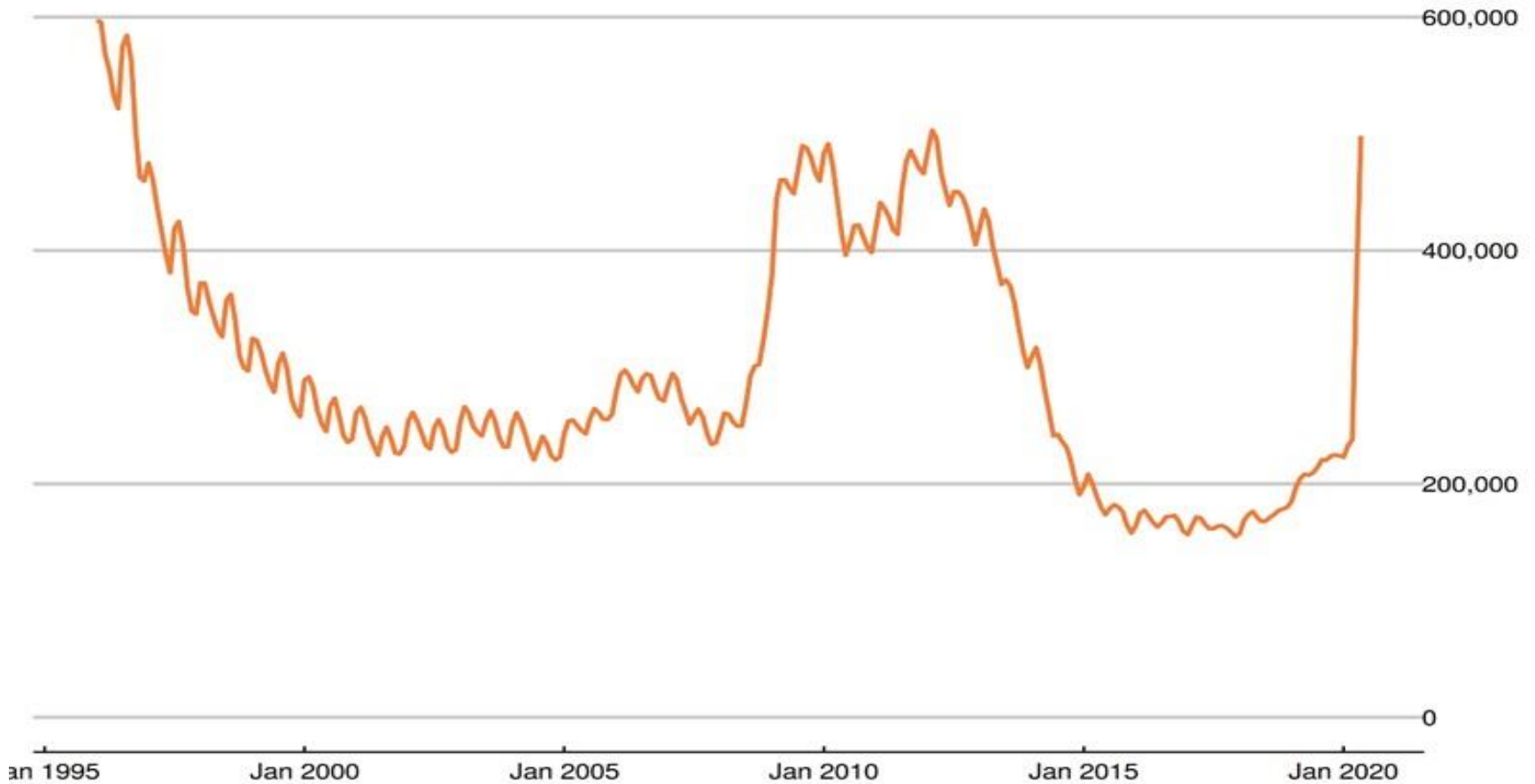
VACANCIES DOWN 60%



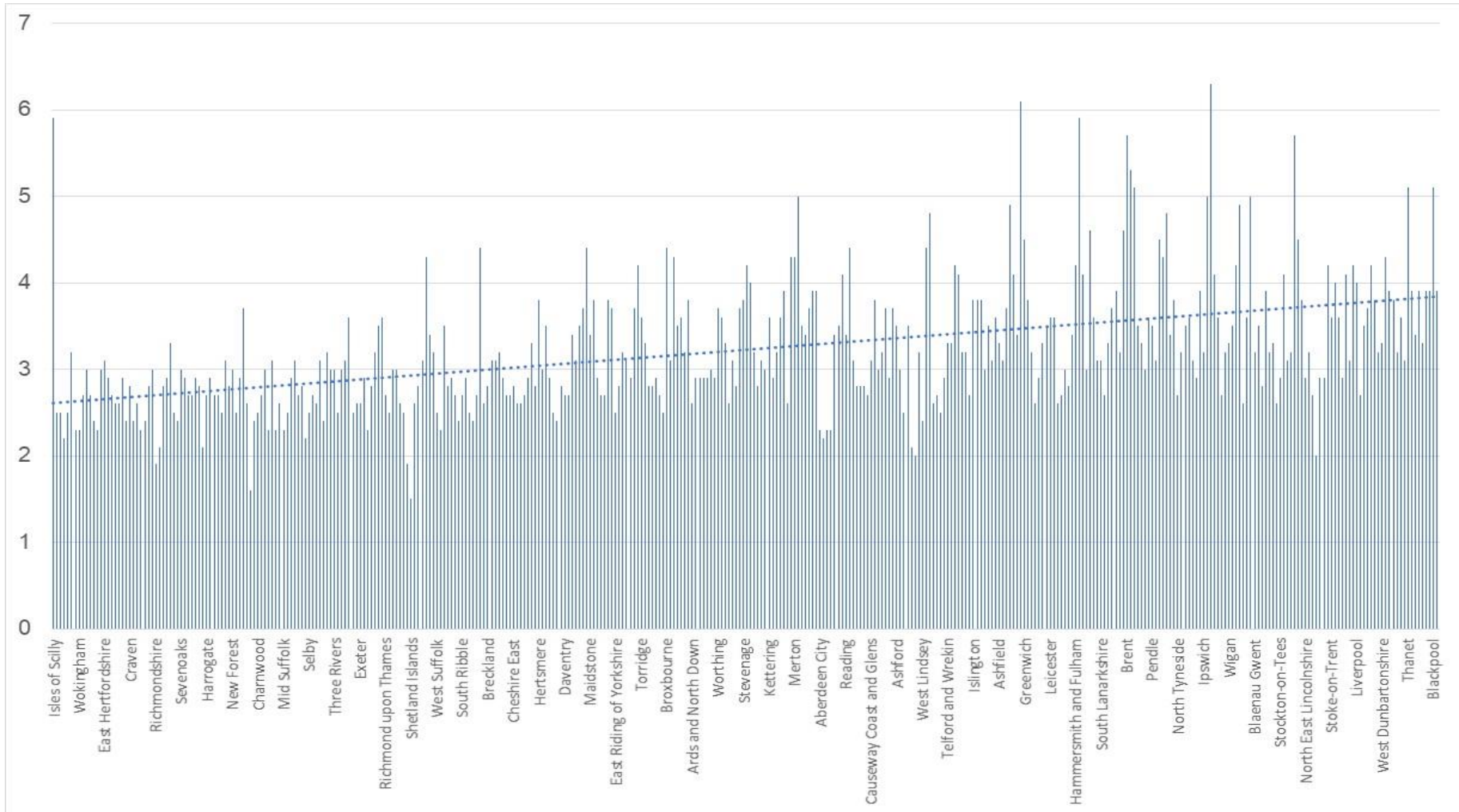
MORE PEOPLE CHASING FEWER JOBS



YOUTH UNEMPLOYMENT HAS DOUBLED IN TWO MONTHS



LEVELLING UP OR SPLITTING APART?



WE NEED A PLAN FOR JOBS

- Record worsening of the labour market means we face an unemployment crisis with unequal impacts
- This is before the uncertain impact of the withdrawal of the furlough scheme covering 8m+ workers
- That's why we need a Plan for Jobs

Figure 21: A plan for jobs

