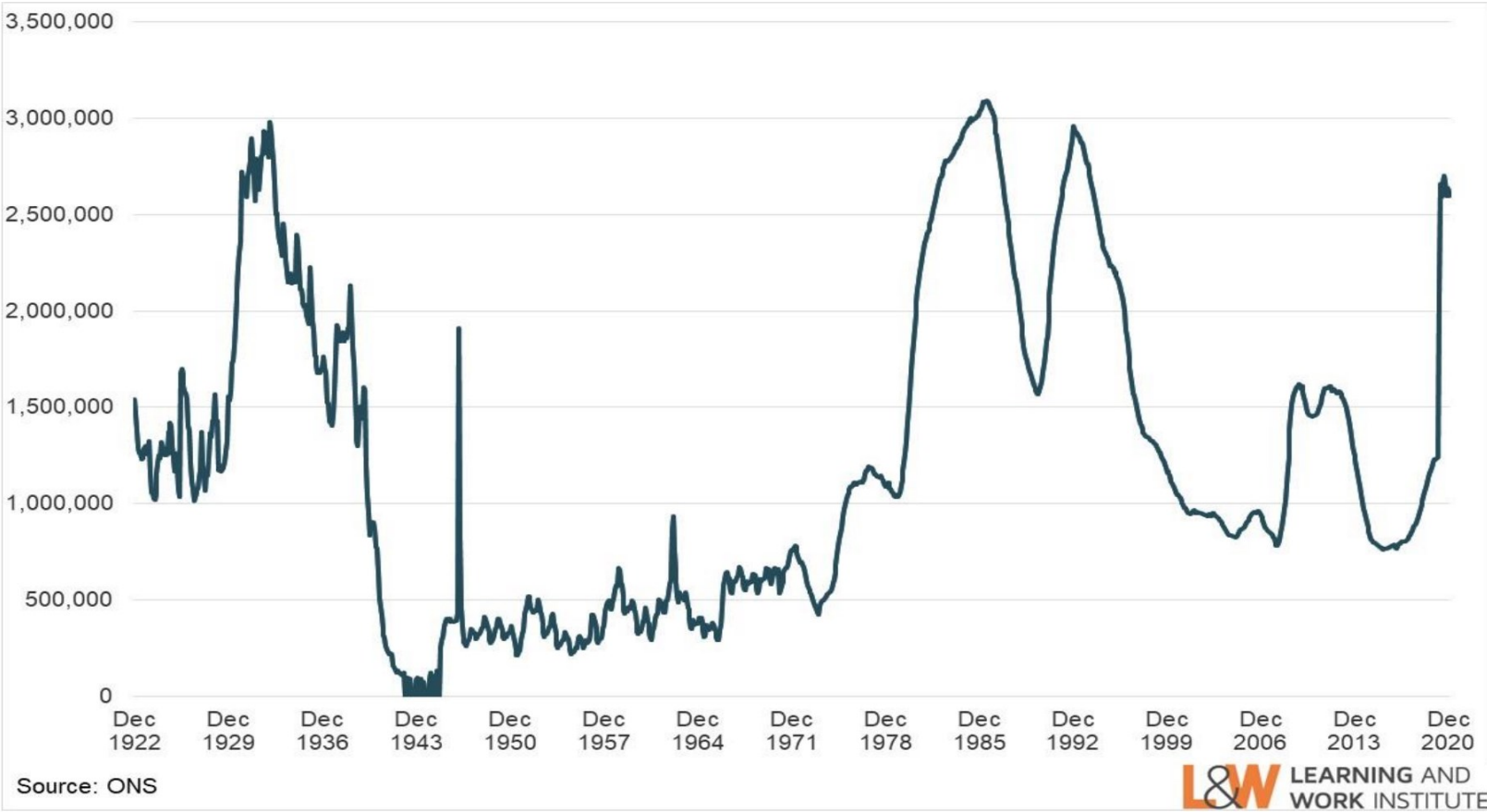


---

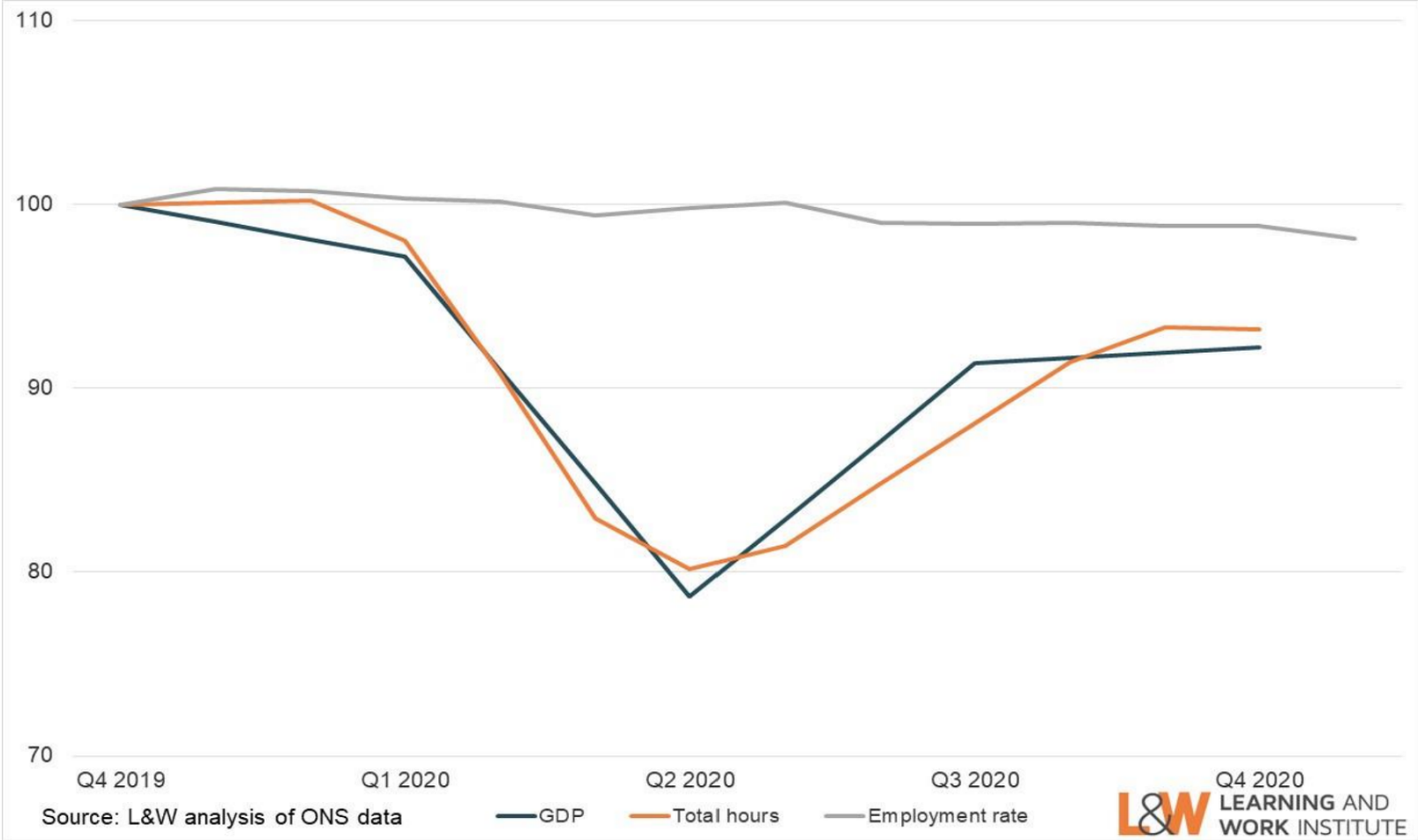
# Recovery and renewal: employment and skills priorities

---

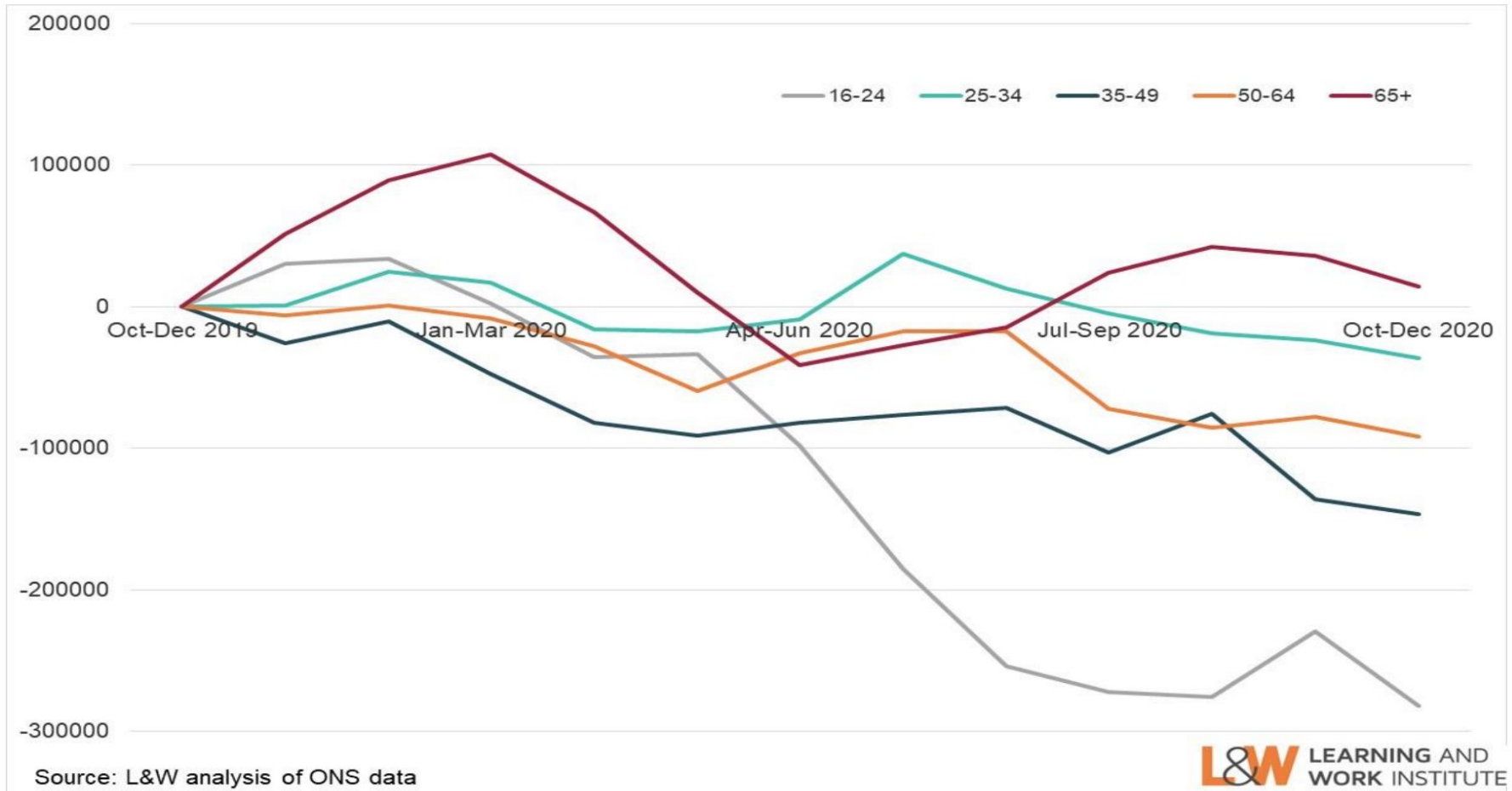
# CRISIS HAS HAD BIG IMPACT



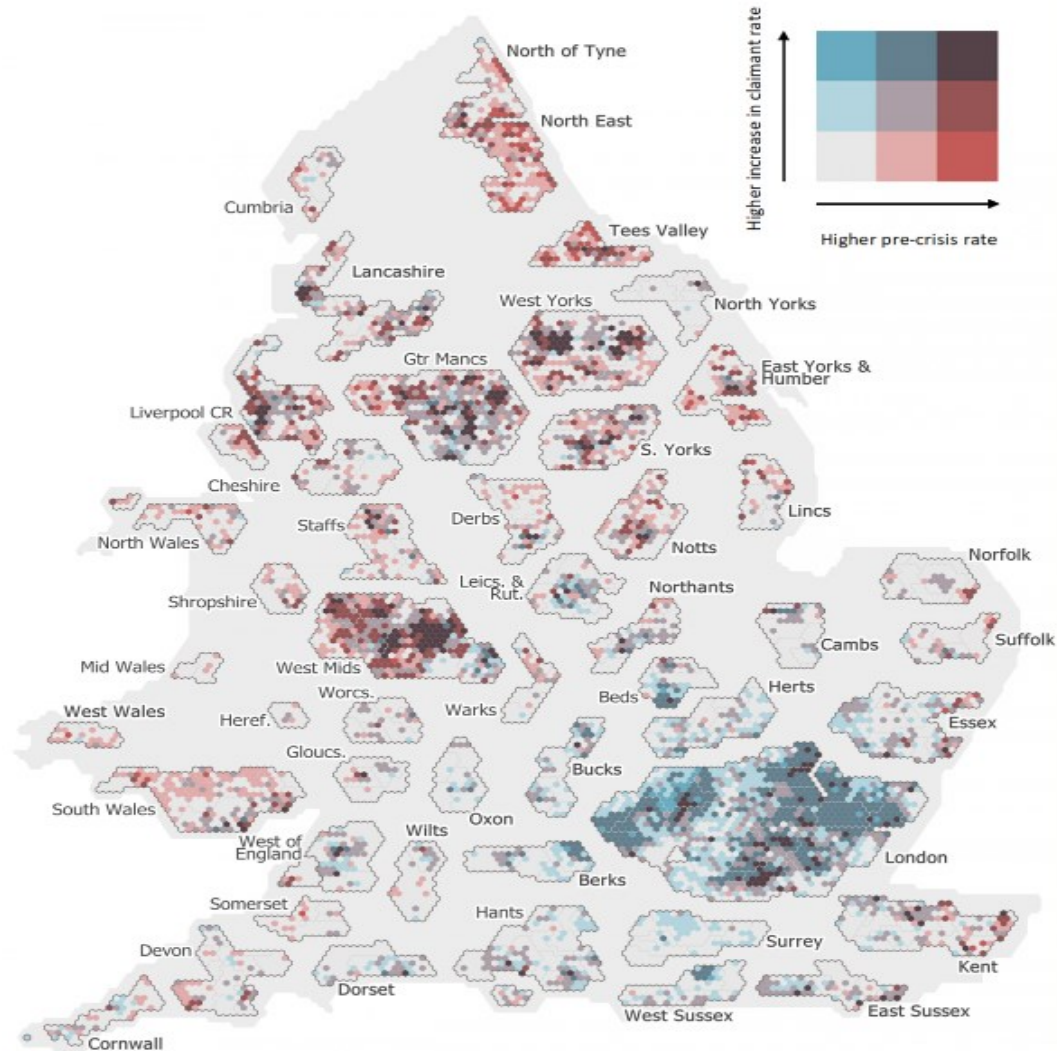
# FURLOUGH LIMITED DAMAGE



# SOME GROUPS HARDER HIT

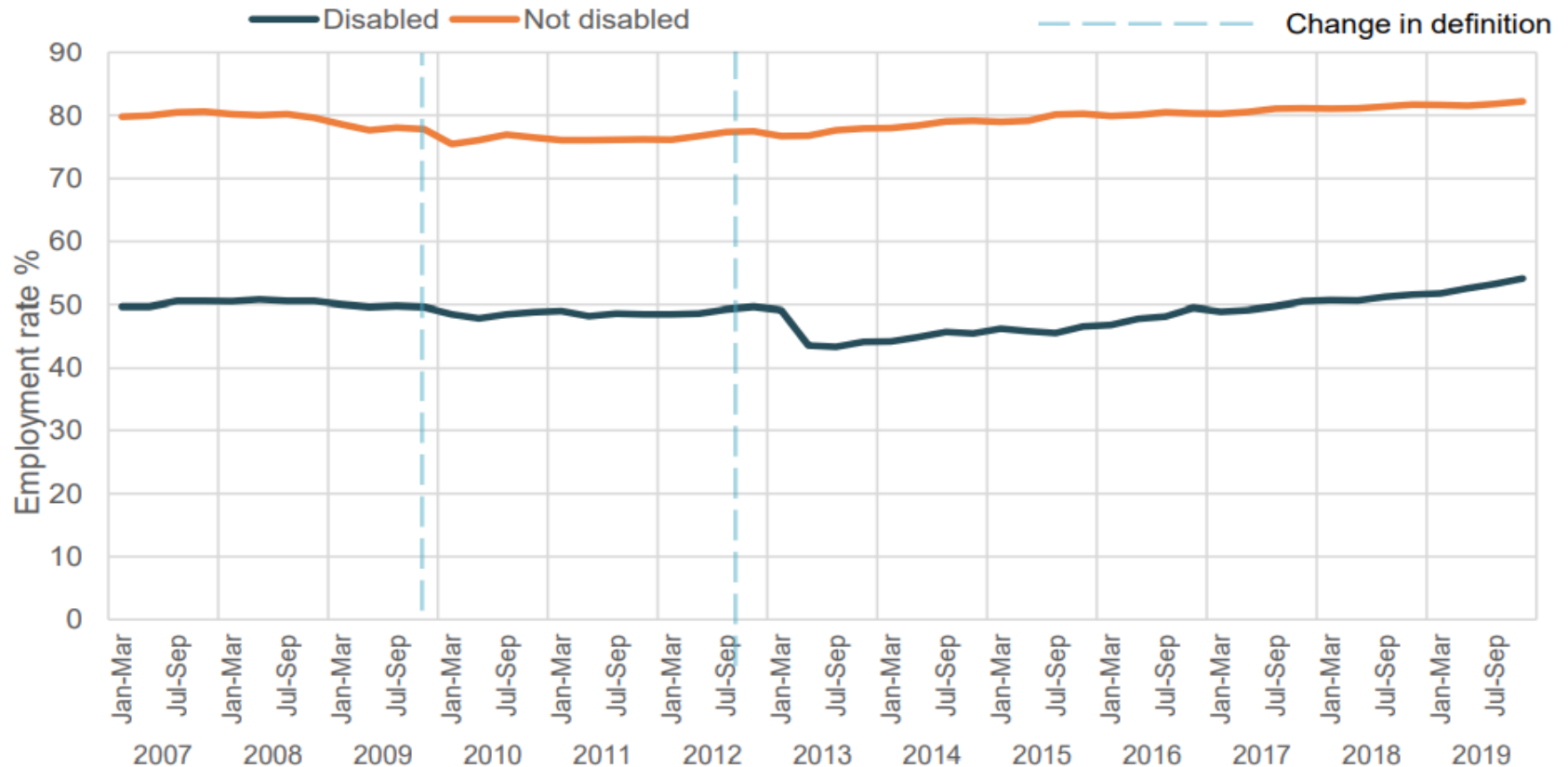


# Pre-crisis claimant rate vs change in claimant rate



Learning and Work Institute analysis of Claimant Count and Population Estimates, ONS  
NB. Each small hexagon represents a single MSOA. MSOAs are grouped into mayoral combined authorities and counties (which include unitary authorities i.e. Nottingham within Nottinghamshire).  
Open Parliament Licence - <https://github.com/houseofcommonslibrary/uk-hex-cartograms-noncontiguous>

# WHERE NEXT?



Source: L&W analysis of Labour Force Survey March 2021